

ANNUAL SECURITY REPORT 2022





Index	1
Campus Safety & Security.....	2
Preparing the Annual Security Report	2
What is “The Jeanne Clery Act”	2
Campus Safety & Security Department	2
Law Enforcement on Campus	3
Incident Reporting	3
Crime Reporting	3
Anonymous Reporting of Crimes	4
Daily Crime Log	4
Campus Access & Maintenance	5
Campus Crime Prevention & Awareness	5
On-Campus Safety Escort Program	5
Crime Definitions	6
Crime Statistics Report	9
Emergencies on Campus	17
Emergency Procedures Guide	18
Timely Warnings & Emergency Notifications	19
Reporting a Missing Person	19
Alcoholic Beverage & Illegal Drug Policy	19
Registered Sex Offender Information	20
Sexual Assault Policies	20
Victim Assistance	22
Campus Awareness Programs	24
Campus Map	25

Campus Safety & Security

The Department of Campus Safety and Security is committed to achieving the highest standards of professionalism and service while remaining dedicated to the principles of integrity and responsibility in responding to the needs of the college community. You can be sure that whether day or night, SCCC remains a safe and comfortable place.

Preparing the Annual Security Report

In accordance with the **Jeanne Clery Disclosure of Campus Security Policy and Campus Crime Statistics Act**, all students and employees will receive updated information annually about crime on and near their respective campuses. All students and employees may also acquire crime statistic information from the Campus Safety and Security Center located in the Student Center Building (D) Room D116.

Pursuant to the Jeanne Clery Act, and college policy, the Sussex County Community College Director of Campus Safety and Security is responsible for preparing and distributing an Annual Security Report for SCCC.

What is the Jeanne Clery Act?

The Jeanne Clery Disclosure of Campus Security Policy and Campus Crime Statistics Act, codified at 20 USC 1092 (f) as a part of the Higher Education Act of 1965, is a federal law that requires colleges and universities to disclose certain timely and annual information about campus crime and security policies. All public and private postsecondary educational institutions participating in federal student aid programs are subject to it.

The Director of Campus Safety and Security, along with other campus security authorities, compile statistics and essential policy components critical for campus safety. These statistics and policy statements are memorialized each year in what is known as the Annual Security Report. Area law enforcement agencies are contacted for records with regards to statistical data for crimes and other occurrences occurring on SCCC property and adjacent public property as defined by the federal mandates. The property locations for 2021 are:

- The main campus at One College Hill Rd, Newton, NJ
- McGuire Technical Educational Center (MTEC) Campus 41-47 Main St, Newton, NJ 07860
- Public Safety Training Academy (PSTA) Campus 114 Morris Turnpike, Newton, NJ
- Adjacent public property

The Annual Security Report is available online via the College website, or from the Office of Safety & Security and the Office of Student Affairs.

Campus Safety & Security Department

The Campus Safety & Security Department is staffed 24 hours a day, 7 days a week, 365 days a year. Its officers utilize foot and vehicle patrols to observe and report situations or activities, which may pose a danger to persons or property. At least twice annually, the

Campus Safety & Security Department provides instruction on security procedures and awareness training on how to be safe on campus. This training occurs during student orientation and faculty/ staff orientation prior to the start of each semester. Additional presentations are given throughout the year to classes on request. This information is also available on the college website.

Law Enforcement on Campus

Please be advised that the Campus Security Officers are not armed and do not have police powers, but they will assist you. SCCC has a cooperative working relationship with the Newton Police Department.

Security Officers respond to all complaints and emergencies on campus. If warranted, security shall contact emergency services for Police/Fire/EMS response. Security Officers have received First Aid, CPR, and AED training in addition to instruction in campus public safety procedures. The College has a cooperative relationship with the Newton Police Department, in which their officers periodically patrol the campus roadways and parking facilities, maintaining public order, crime prevention, and provide for the enforcement of local and state laws.

Radio Interoperability

Campus Safety & Security maintains a direct line of communication by radio with the Newton Police Department. This enhances operability and reduces time delays when reporting important information during emergencies or the reporting of crimes.

Incident Reporting

Any incident regarding safety or security on the Sussex County Community College campus should be reported on an Incident Report Form. These forms are available in the Security Center (D116).

**For emergencies or criminal activities, please dial
911 or contact security at (973) 300-2222.**

Utilize the Emergency Blue Light towers for a direct connection to security.

Blue Light towers are in our parking areas. By pushing the Red Emergency button, you will be directly connected to security who will respond to your emergency needs. They will also summon the appropriate emergency services, Fire/EMS/Police if needed.

Crime Reporting

Students, faculty, and staff are encouraged to report crimes to campus security. Crimes in progress should be reported to law enforcement without delay by calling 9-1-1. Campus security will respond to all complaints. All reports of crime will be fully recorded, investigated, and reported in accordance with the definitions used in the Uniform Crime Reporting Systems of the Department of Justice, Federal Bureau of Investigation.



SCCC cooperates with local law enforcement authorities regarding on-campus and off-campus crimes involving SCCC students. These crimes are investigated and, when appropriate, are included in the annual College crime statistics.

Anonymous Reporting of Crimes

You can always report a crime anonymously to Security or any Campus Security Authority (CSA). CSA's include:

- President, Vice Presidents, Deans, Directors
- Student Affairs
- Judicial Affairs & Discipline
- Athletic Director & team coaches
- Faculty Advisor to student groups
- Veterans Affairs
- Security Personnel

Please be advised that a licensed mental health counselor(s) or pastoral counselors that are working within the scope of their license or religious assignment are not required to report crimes. Our College professional counselors, when acting as such, are not considered Campus Security Authorities and are not required to report these crimes for inclusion into the annual disclosure of crime statistics. As a matter of policy, counselors are encouraged; when they deem it appropriate, to inform persons being counseled of the reasons and procedures to report crimes voluntarily for investigation and inclusion in the annual security report, daily crime log, and annual crime statistics.

Anonymous Reporting to Law Enforcement

If you would like to report a crime anonymously to law enforcement, you can take advantage of two available programs.

Newton Police Department's **Text-A-Tip** program. No one will know the identity of the text tipster. The technology routes messages through a server that encrypts cell phone numbers before they get to the police. The technology also allows investigators to securely reply to the cell phone without compromising the tipster's identity. All you have to do is:

- Send Text Message tips to **CRIMES (274-637)**
- Use the keyword: NEWTON

For example, text "**NEWTON John Doe is selling drugs at describe location or vehicle**" to **CRIMES (274-637)**.

Sussex County Sheriff's Office maintains a confidential "**Crime Stoppers Hotline**," which can be reached at 973-300-CRIME (2746).

Crimes may also be reported anonymously to any College Security Authority.

These services are for reporting tips to aid in investigations, not for reporting crimes in progress. To report a crime in progress, call 9-1-1.

Daily Crime Log

The Department of Campus Safety & Security maintains a daily log of crimes and incidents that occur on campus, non-campus college property, and adjacent public property. The information is recorded by date, time, location, and disposition of the complaint. The log is available for inspection by anyone, in the office of the Director of Campus Operations in room D320. While most incidents are posted, the Director of Campus Operations is required to classify an incident as “confidential” in order not to jeopardize a criminal investigation or the identity of a victim.

Campus Access & Maintenance of Facilities

The SCCC campus is closed from 10 pm to 7 am. Building accessibility is permitted only during normal business hours unless otherwise approved by a College administrator.

Security and safety issues are given high priority in the improvement and maintenance of facilities. The Campus Safety & Security Department continuously conducts security surveys of existing facilities, with findings and recommendations forwarded to appropriate administrative areas for remedial action when necessary.

Campus Crime Prevention and Awareness

Students, faculty, staff, and visitors are responsible for their safety. However, security and safety procedures and practices are presented at orientation programs at a minimum of twice yearly. They are also listed on the college website.

Some key tips that may help you stay safe:

- Try to avoid walking alone, especially at night.
- When possible, walk with another person or in a group. If walking alone, be even more alert to your surroundings.
- Be alert when using walkways that pass close to shrubbery, dark doorways and other places where someone may hide. Avoid shortcuts and stay in well-lighted areas.
- Do not accept rides from strangers. If a car approaches and you are threatened, scream, and run towards a safe and populated area.
- Maintain a secure grip on your purse. Avoid carrying large amounts of money or wearing expensive jewelry.
- Avoid working in or leaving classrooms alone at night. When possible, arrange for an escort. Never leave your purse in view when working in labs or offices.
- Always lock your car, and have your keys readily available when approaching.
- Report suspicious or peculiar activity to security without delay.

On-Campus Safety Escort Program

If you need Campus Security to escort you to or from your car, or to another building/location on campus, you may request this from any security officer on patrol, or call our direct non-emergent number at 973-300-2222 (ext. 2222 from a College phone). You may also use the black non-emergent info button on the Emergency Code Blue units located in our parking areas. Please be advised that you are under no obligation to notify us why you are requesting this service.

The On-Campus Safety Escort program is available to the entire College community (students, faculty, staff, and visitors) who would like to have an officer escort them to and/or from a campus building/location for any reason.

Please keep in mind we can only escort you on campus and not off College property. Our response time may vary based on the program demand and the availability of Campus Security Officers.

The Jeanne Clery Act and Crime Statistics

In accordance with the **Jeanne Clery Disclosure of Campus Security Policy and Campus Crime Statistics Act**, all students and employees will receive updated information annually about crime on and near their respective campuses. All students and employees may also acquire crime statistic information from the Campus Safety & Security Office located in room B321. The following tables represent reportable Clery data for three years as required by law.

Clery Crime Definitions

Aggravated Assault

An unlawful attack by one person upon another for the purpose of inflicting severe or aggravated bodily injury. This type of assault usually is accompanied by the use of a weapon or by a means likely to produce death or great bodily harm.

Arson

Any willful or malicious burning or attempt to burn, with or without intent to defraud, a dwelling house, public building, motor vehicle or aircraft, personal property of another, etc.,

Burglary

The unlawful entry of a structure to commit a felony or theft.

Criminal Homicide-Manslaughter by Negligence

The killing of another person through gross negligence.

Criminal Homicide-Murder and Non-Negligent Manslaughter

The willful (non-negligent) killing of one human being by another.

Drug Abuse Violations

Are defined as the violation of laws prohibiting the production, distribution and/or use of certain controlled substances and the equipment or devices utilized in their preparation and/or use. The violation of laws prohibiting unlawful cultivation, manufacture, distribution, sale, purchase, use, possession, transportation, or importation of any controlled drug or narcotic substance. Arrests for violations of state and local laws, specifically those relating to the unlawful possession, sale, use, growing, manufacturing and making of narcotic drugs.

Liquor Law Violations

Are defined as the violation of laws or ordinances prohibiting the manufacture, sale, purchase, transportation, possession or use of alcoholic beverages, not including driving under the influence and drunkenness.

Motor Vehicle Theft

The theft or attempted theft of a motor vehicle.

Robbery

The taking or attempting to take anything of value from the care, custody, or control of a person or persons by force or threat of force or violence and/or by putting the victim in fear.

Sexual Assault

Any sexual act directed against another person without the consent of the victim including incidents where the victim is incapable of giving consent. This shall include:

- **Rape:** is the penetration, no matter how slight of the vagina or anus with any body part or object, or oral penetration by a sex organ of another person without the consent of the victim.
- **Fondling:** is the touching of the private body parts of another person for the purpose of sexual gratification, without the consent of the victim, including instances where the victim is incapable of giving consent because of his/her age or because of his/her temporary or permanent mental incapacity
- **Incest:** is sexual intercourse between persons who are related to each other within the degrees wherein marriage is prohibited by law.
- **Statutory Rape:** is sexual intercourse with a person who is under the statutory age of consent.

Weapon Law Violations

The violation of laws or ordinances prohibiting the manufacture, sale, purchase, transportation, possession, concealment, or use of firearms, cutting instruments, explosives, incendiary devices or other deadly weapons. This classification encompasses weapons offenses that are regulatory in nature.

Hate Crimes

The following acts are now reportable as Hate Crimes under the Cleary Act when motivated by prejudice based on race, gender, gender identity, religion, sexual orientation, ethnicity, national origin or disability:

Destruction, damage, or vandalism of property

To willfully or maliciously destroy, damage, deface or injure real or personal property without the consent of the owner or the person having custody or control of it.

Intimidation

To unlawfully place another person in reasonable fear of bodily harm through the use of threatening words and/or other conduct, but without displaying a weapon or subjecting the victim to actual physical attack.

Larceny-Theft

The unlawful taking, carrying or riding away of property from the possession or constructive possession of another.

Simple Assault

All assaults and attempted assaults which are not of an aggravated nature and do not result in severe or aggravated bodily injury.

VAWA Offenses (Violence Against Women Act) definitions

Dating Violence is defined as *violence committed by a person who is or has been in a social relationship of a romantic or intimate nature with the victim. Dating violence includes, but is not limited to, sexual or physical abuse or the threat of such abuse.* Dating violence does not include acts covered under the definition of domestic violence.

Domestic Violence is defined as a *felony or misdemeanor crime of violence committed—*

By a current or former spouse or intimate partner of the victim;

By a person with whom the victim shares a child in common;

By a person who is cohabitating with, or has cohabitated with, the victim as a spouse or intimate partner;

By a person similarly situated to a spouse of the victim under the domestic or family violence laws of the jurisdiction in which the crime of violence occurred;

By any other person against an adult or youth victim who is protected from that person's acts under the domestic or family violence laws of the jurisdiction in which the crime of violence occurred.

Stalking is defined as engaging in the course of conduct directed at a specific person that would cause a reasonable person to fear for the person's safety or the safety of others; or suffer substantial emotional distress.

Crime Statistics Report – Criminal Offenses On-Campus

Offense	On-Campus Property
---------	--------------------

	2019	2020	2021
Murder and Non-negligent Manslaughter	0	0	0
Negligent Manslaughter	0	0	0
Sex Offenses			
Forcible			
Rape	0	0	0
Fondling	0	0	0
Non-Forcible			
• Statutory Rape	0	0	0
• Incest	0	0	0
Robbery	0	0	0
Aggravated Assault	0	0	0
Burglary			
• Forcible Entry	0	0	0
• Unlawful Entry (no force)	0	0	0
Motor Vehicle Theft	0	0	0
Arson	0	0	0
Domestic Violence	0	0	0
Dating Violence	0	0	0
Stalking	0	0	0

Crime Statistics Report – Criminal Offenses Non-Campus Property

Offense	Non-Campus Property		
	2019	2020	2021
Murder and Non-negligent Manslaughter	0	0	0
Negligent Manslaughter	0	0	0
Sex Offenses			
Forcible			
• Rape	0	0	0
• Fondling	0	0	0

Offense	Non-Campus Property		
Non Forcible			
• Statutory Rape	0	0	0
• Incest	0	0	0
Robbery	0	0	0
Aggravated Assault	0	0	0
Burglary			
• Forcible Entry	0	0	0
• Unlawful Entry (no force)	0	0	0
Motor Vehicle Theft	0	0	0
Arson	0	0	0
Domestic Violence	0	0	0
Dating Violence	0	0	0
Stalking	0	0	0

Crime Statistics Report – Adjacent Public Property

Offense	Adjacent Public Property		
	2019	2020	2021
Murder and Non-Negligent Manslaughter	0	0	0
Negligent Manslaughter	0	0	0
Sex Offenses			
Forcible			
• Rape	0	0	0
• Fondling	0	0	0
Non Forcible	0		
• Statutory Rape	0	0	0
• Incest	0	0	0
Robbery	0	0	0
Aggravated Assault	0	0	0
Burglary			
• Forcible Entry	0	0	0

• Unlawful Entry (no force)	0	0	0
Motor Vehicle Theft	0	0	0
Arson	0	0	0
Offense	Adjacent Public Property		
Domestic Violence	0	0	0
Dating Violence	0	0	0
Stalking	0	0	0

Crime Statistics Report – Arrests and Referrals On-Campus

Offense	2019	2020	2021
Liquor Law Violations - Arrests	0	0	0
Drug Law Violations - Arrests	0	0	0
Weapons Law Violations - Arrests	0	0	0
Liquor Law Disciplinary Referrals	0	0	0
Drug Law Disciplinary Referrals	0	0	0
Weapons Law Disciplinary Referrals	0	0	0

Crime Statistics Report – Arrests and Referrals Non-Campus Property

Offense	2019	2020	2021
Liquor Law Violations - Arrests	0	0	0
Drug Law Violations - Arrests	0	0	0
Weapons Law Violations - Arrests	0	0	0
Liquor Law Disciplinary Referrals	0	0	0
Drug Law Disciplinary Referrals	0	0	0
Weapons Law Disciplinary Referrals	0	0	0

Crime Statistics Report – Arrests and Referrals Adjacent Public Property

Offense	2019	2020	2021
Liquor Law Violations - Arrests	0	0	0

Drug Law Violations - Arrests	0	0	0
Weapons Law Violations - Arrests	0	0	0
Liquor Law Disciplinary Referrals	0	0	0
Drug Law Disciplinary Referrals	0	0	0
Weapons Law Disciplinary Referrals	0	0	0

Crime Statistics Report – Hate Crimes On-Campus 2019

Criminal Offense	Total	Race	Religion	Sexual Orientation	Gender	Disability	Ethnicity/National Origin
Murder/Non-negligent manslaughter	0	0	0	0	0	0	0
Negligent manslaughter	0	0	0	0	0	0	0
Rape	0	0	0	0	0	0	0
Fondling	0	0	0	0	0	0	0
Incest	0	0	0	0	0	0	0
Statutory Rape	0	0	0	0	0	0	0
Robbery	0	0	0	0	0	0	0
Aggravated assault	0	0	0	0	0	0	0
Burglary	0	0	0	0	0	0	0
Motor vehicle theft	0	0	0	0	0	0	0
Arson	0	0	0	0	0	0	0
Simple Assault	0	0	0	0	0	0	0
Larceny - theft	0	0	0	0	0	0	0
Intimidation	0	0	0	0	0	0	0
Destruction/damage/vandalism of property	0	0	0	0	0	0	0

Crime Statistics Report – Hate Crimes On-Campus 2020

Criminal Offense	Total	Race	Religion	Sexual Orientation	Gender	Disability	Ethnicity/National Origin
Murder/Non-negligent manslaughter	0	0	0	0	0	0	0

Negligent manslaughter	0	0	0	0	0	0	0
Rape	0	0	0	0	0	0	0
Fondling	0	0	0	0	0	0	0
Incest	0	0	0	0	0	0	0
Statutory Rape	0	0	0	0	0	0	0
Robbery	0	0	0	0	0	0	0
Aggravated assault	0	0	0	0	0	0	0
Burglary	0	0	0	0	0	0	0
Motor vehicle theft	0	0	0	0	0	0	0
Arson	0	0	0	0	0	0	0
Simple Assault	0	0	0	0	0	0	0
Larceny - theft	0	0	0	0	0	0	0
Intimidation	0	0	0	0	0	0	0
Destruction/damage/ vandalism of property	0	0	0	0	0	0	0

Crime Statistics Report – Hate Crimes On-Campus 2021

Criminal Offense	Total	Race	Religion	Sexual Orientation	Gender	Disability	Ethnicity/National Origin
Murder/Non-negligent manslaughter	0	0	0	0	0	0	0
Negligent manslaughter	0	0	0	0	0	0	0
Rape	0	0	0	0	0	0	0
Fondling	0	0	0	0	0	0	0
Incest	0	0	0	0	0	0	0
Statutory Rape	0	0	0	0	0	0	0
Robbery	0	0	0	0	0	0	0
Aggravated assault	0	0	0	0	0	0	0
Burglary	0	0	0	0	0	0	0
Motor vehicle theft	0	0	0	0	0	0	0
Arson	0	0	0	0	0	0	0
Simple Assault	0	0	0	0	0	0	0
Larceny - theft	0	0	0	0	0	0	0
Intimidation	0	0	0	0	0	0	0

Destruction/damage/ vandalism of property	0	0	0	0	0	0	0
---	---	---	---	---	---	---	---

Crime Statistics Report – Hate Crimes Non-Campus 2019

Criminal Offense	Total	Race	Religion	Sexual Orientation	Gender	Disability	Ethnicity/National Origin
Murder/Non-negligent manslaughter	0	0	0	0	0	0	0
Negligent manslaughter	0	0	0	0	0	0	0
Rape	0	0	0	0	0	0	0
Fondling	0	0	0	0	0	0	0
Incest	0	0	0	0	0	0	0
Statutory rape	0	0	0	0	0	0	0
Robbery	0	0	0	0	0	0	0
Aggravated assault	0	0	0	0	0	0	0
Burglary	0	0	0	0	0	0	0
Motor vehicle theft	0	0	0	0	0	0	0
Arson	0	0	0	0	0	0	0
Simple Assault	0	0	0	0	0	0	0
Larceny - theft	0	0	0	0	0	0	0
Intimidation	0	0	0	0	0	0	0
Destruction/damage/ vandalism of property	0	0	0	0	0	0	0

Crime Statistics Report – Hate Crimes Non-Campus 2020

Criminal Offense	Total	Race	Religion	Sexual Orientation	Gender	Disability	Ethnicity/National Origin
Murder/Non-negligent manslaughter	0	0	0	0	0	0	0
Negligent manslaughter	0	0	0	0	0	0	0
Rape	0	0	0	0	0	0	0
Fondling	0	0	0	0	0	0	0

Incest	0	0	0	0	0	0	0
Statutory Rape	0	0	0	0	0	0	0
Robbery	0	0	0	0	0	0	0
Aggravated assault	0	0	0	0	0	0	0
Burglary	0	0	0	0	0	0	0
Motor vehicle theft	0	0	0	0	0	0	0
Arson	0	0	0	0	0	0	0
Simple Assault	0	0	0	0	0	0	0
Larceny - theft	0	0	0	0	0	0	0
Intimidation	0	0	0	0	0	0	0
Destruction/damage/ vandalism of property	0	0	0	0	0	0	0

Crime Statistics Report – Hate Crimes Non-Campus 2021

Criminal Offense	Total	Race	Religion	Sexual Orientation	Gender	Disability	Ethnicity/National Origin
Murder/Non-negligent manslaughter	0	0	0	0	0	0	0
Negligent manslaughter	0	0	0	0	0	0	0
Rape	0	0	0	0	0	0	0
Fondling	0	0	0	0	0	0	0
Incest	0	0	0	0	0	0	0
Statutory Rape	0	0	0	0	0	0	0
Robbery	0	0	0	0	0	0	0
Aggravated assault	0	0	0	0	0	0	0
Burglary	0	0	0	0	0	0	0
Motor vehicle theft	0	0	0	0	0	0	0
Arson	0	0	0	0	0	0	0
Simple Assault	0	0	0	0	0	0	0
Larceny - theft	0	0	0	0	0	0	0
Intimidation	0	0	0	0	0	0	0
Destruction/damage/ vandalism of property	0	0	0	0	0	0	0

Crime Statistics Report – Hate Crimes Adjacent Public Property 2019

Criminal Offense	Total	Race	Religion	Sexual Orientation	Gender	Disability	Ethnicity/National Origin
Murder/Non-negligent manslaughter	0	0	0	0	0	0	0
Negligent manslaughter	0	0	0	0	0	0	0
Rape	0	0	0	0	0	0	0
Fondling	0	0	0	0	0	0	0
Incest	0	0	0	0	0	0	0
Statutory Rape	0	0	0	0	0	0	0
Robbery	0	0	0	0	0	0	0
Aggravated assault	0	0	0	0	0	0	0
Burglary	0	0	0	0	0	0	0
Motor vehicle theft	0	0	0	0	0	0	0
Arson	0	0	0	0	0	0	0
Simple Assault	0	0	0	0	0	0	0
Larceny - theft	0	0	0	0	0	0	0
Intimidation	0	0	0	0	0	0	0
Destruction/damage/ vandalism of property	0	0	0	0	0	0	0

Crime Statistics Report – Hate Crimes Adjacent Public Property 2020

Criminal Offense	Total	Race	Religion	Sexual Orientation	Gender	Disability	Ethnicity/National Origin
Murder/Non-negligent manslaughter	0	0	0	0	0	0	0
Negligent manslaughter	0	0	0	0	0	0	0
Rape	0	0	0	0	0	0	0
Fondling	0	0	0	0	0	0	0
Incest	0	0	0	0	0	0	0
Statutory rape	0	0	0	0	0	0	0
Robbery	0	0	0	0	0	0	0
Aggravated assault	0	0	0	0	0	0	0

Burglary	0	0	0	0	0	0	0
Motor vehicle theft	0	0	0	0	0	0	0
Arson	0	0	0	0	0	0	0
Simple Assault	0	0	0	0	0	0	0
Larceny - theft	0	0	0	0	0	0	0
Intimidation	0	0	0	0	0	0	0
Destruction/damage/ vandalism of property	0	0	0	0	0	0	0

Crime Statistics Report – Hate Crimes Adjacent Public Property 2021

Criminal Offense	Total	Race	Religion	Sexual Orientation	Gender	Disability	Ethnicity/National Origin
Murder/Non-negligent manslaughter	0	0	0	0	0	0	0
Negligent manslaughter	0	0	0	0	0	0	0
Rape	0	0	0	0	0	0	0
Fondling	0	0	0	0	0	0	0
Incest	0	0	0	0	0	0	0
Statutory rape	0	0	0	0	0	0	0
Robbery	0	0	0	0	0	0	0
Aggravated assault	0	0	0	0	0	0	0
Burglary	0	0	0	0	0	0	0
Motor vehicle theft	0	0	0	0	0	0	0
Arson	0	0	0	0	0	0	0
Simple Assault	0	0	0	0	0	0	0
Larceny - theft	0	0	0	0	0	0	0
Intimidation	0	0	0	0	0	0	0
Destruction/damage/ vandalism of property	0	0	0	0	0	0	0

Crime Statistics Report – VAWA Offenses On- Campus

Criminal Offense	2019	2020	2021
Dating Violence	0	0	0
Domestic Violence	0	0	0
Stalking	0	0	0

Crime Statistics Report – VAWA Offenses Off- Campus

Criminal Offense	2019	2020	2021
Dating Violence	0	0	0
Domestic Violence	0	0	0
Stalking	0	0	0

Crime Statistics Report – VAWA Adjacent Public Property

Criminal Offense	2019	2020	2021
Dating Violence	0	0	0
Domestic Violence	0	0	0
Stalking	0	0	0

This report includes the following locations as required by law:

- SCCC Main Campus – One College Hill Rd., Newton, NJ
 - SCCC Public Safety Training Academy - 114 Morris Turnpike, Newton, NJ
 - MTEC Campus 41-47 Main St, Newton, NJ 07860
- Adjacent Public Property
- Off-Campus Property utilized specifically identified as:
 - Vernon High School at 1832 County Rd 565, Glenwood, NJ 07418
 - 829 Elkridge Road Linthicum, MD
 - 535 N Gannon Ave, Staten Island, NY
 - 805 and 807 Scrub Jay Way, Davenport, FL
 - 6708 Tilton Rd, Egg Harbor, NJ

Emergencies on Campus

All SCCC buildings are equipped with fire alarms. In the event of fire or smoke conditions or any other situation, which requires evacuation of the buildings, the fire alarm will sound, and the local fire department will respond. At the sound of the fire alarm all faculty, staff, and students are required to evacuate the building. The system features a flashing strobe light, which signals the need to evacuate the building.

The Student Center also has established emergency rescue areas for those who need assistance exiting the building. Those individuals should proceed to the emergency rescue areas located on their floor, where emergency personnel will provide assistance.






If an emergency on the SCCC campus requires the use of evacuation procedures, it is necessary that the College have information about individuals who may need assistance during such an event. If a student has any condition that may endanger themselves or others in an emergency, they should call the SCCC ADA Coordinator, Pamela Cavanagh at (973) 300-2153, to be sure that you are included in the security information. This information will be strictly confidential and will be made available only to those who need it during an emergency.



EMERGENCY PROCEDURES GUIDE



Dial 911 to report an IMMEDIATE EMERGENCY
Dial 222 from any campus phone to contact Security

ALL 9-1-1 CALLS MADE FROM A CAMPUS PHONE ARE MONITORED BY THE SECURITY CENTER TO FACILITATE AN EFFICIENT RESPONSE. PLEASE USE A CAMPUS PHONE WHEN CALLING 9-1-1 IF POSSIBLE.

 <p style="color: red; font-weight: bold; text-align: center;">ACTIVE SHOOTER</p>	<ul style="list-style-type: none"> • RUN/EVACUATE: Leave belongings, have an escape plan. • HIDE: Stay out of view and block the entry to your hiding place. Silence your phone. • FIGHT: As a last resort, attempt to incapacitate the shooter. Act with physical aggression, throw items at the shooter.
 <p style="color: red; font-weight: bold; text-align: center;">SHELTER IN PLACE/ LOCKDOWN</p>	<ul style="list-style-type: none"> • Remain Calm • Secure the location where you are • Silence all cellular devices • Remain in secured location • Await further instructions from Emergency Responders
 <p style="color: red; font-weight: bold; text-align: center;">SEVERE WEATHER</p>	<ul style="list-style-type: none"> • Stay away from the windows, close any doors. • Move to an interior room on the lowest level. • Remain in a safe area until the danger has passed. • Follow directions given by emergency personnel.
 <p style="color: red; font-weight: bold; text-align: center;">MEDICAL EMERGENCY</p>	<p>Call 9-1-1 Call Security: 973-300-2222</p> <p>Be prepared to:</p> <p>Give the location of the emergency</p> <p>Nature of the emergency</p> <p>Your name</p>
 <p style="color: red; font-weight: bold; text-align: center;">EVACUATION</p>	<ul style="list-style-type: none"> • Immediately Evacuate at the sound of the alarm, instruct students to take their keys. ONLY use stairways. • Assemble in designated area. Take attendance, report names of those missing to Emergency Responders. • DO NOT re-enter the building until advised by officials.

		<ul style="list-style-type: none"> • If physically challenged occupants cannot evacuate, relocate them to an area of assistance. Notify Emergency Services of their location.
	FIRE	<ul style="list-style-type: none"> • Alert other and activate the nearest fire alarm. • Do not attempt to fight the fire. • Exit the building, close doors behind you to prevent spreading of fire. • Call 9-1-1 and advise them of the location and size of the fire. • DO NOT re-enter the building.
	POWER OUTAGE	<ul style="list-style-type: none"> • Move to a lighted area. Exits are indicated by lighted signs. • Turn off or unplug computers and other high voltage sensitive equipment.

Timely Warnings & Emergency Notifications

Timely warnings are triggered by crimes that have already occurred but represent an ongoing threat. Sussex County Community College will issue a timely warning for any crime that is reported to campus security authorities or local law enforcement and is considered to represent a serious or continuing threat to students and employees. Emergency notifications are triggered by an event that is currently occurring on or imminently threatening the campus and pose a significant emergency or dangerous situation involving an immediate threat to the health or safety of students or employees.

The Regroup Alert System is a service used for sending timely warnings and emergency notifications to our students, faculty, staff, and other members of the campus community. Using Regroup Alert we are able to disseminate emergency notifications and timely warnings to thousands of people via multiple communication channels, including mobile text alerts, email, and recorded voice messages. The system can distribute an alert to the entire campus community in case of an emergency or a closure due to inclement weather. You can take advantage of this helpful service by registering at <https://sussex.reggroup.com>

Reporting a Missing Person

Anyone wishing to report a missing person can do so to SCCC Campus Security. Campus Security will immediately compile facts relevant to the report of the missing person and initiate an investigation. If circumstances indicate a police inquiry is warranted, the Newton Police or other appropriate law enforcement authorities will immediately be notified. Campus Security will support the investigation by providing whatever facts are available, including video recordings, photos, schedules, emergency contact and any other information relevant to the search for the missing person. Information regarding the report of the missing person will be documented in a campus incident report.

Alcoholic Beverages and Illegal Drugs

Sussex County Community College is an educational institution committed to maintaining an environment which allows students to enjoy the full benefits of their learning experience and to understand the negative consequences of the illicit use of alcohol and drugs on their lives. The College is committed to the premise that its students and employees shall learn and work in a drug and alcohol-free environment. Sussex County Community College in no way will condone the illicit use of alcohol and drugs by either its employees or its students and will not foster or promote any such activity. In accordance with the policy approved by the Board of Trustees of Sussex County Community College (initially adopted: February 20, 1990, revised: August 28, 1990) and in accordance with Public Law 101-226, the College declares that it will make every effort to provide its students and employees with an environment that is free of the problems associated with the unauthorized use and abuse of alcohol and illegal drugs. The College is committed to promoting the wellness and positive self-development of its students and employees. The unauthorized use and abuse of alcohol

and the illegal use and abuse of drugs inhibit students and employees from attaining the benefit of their learning and/or work experience, expose them to serious illness and health risks and, therefore, are prohibited. The College will impose disciplinary sanctions on students and employees that may include expulsion or termination of employment and referral for prosecution for violations of the standard of conduct. Such disciplinary sanctions may include the completion of a rehabilitation program.

Registered Sex Offender Information

Information on registered sex offenders may be obtained from the Sussex County Prosecutors Office, Megan's Law Unit at (973) 383-1570 or at the NJ State Police website at http://www.njsp.org/info/reg_sexoffend.html

Sexual Assault

Sussex County Community College will not tolerate sexual assault in any form. Where there is probable cause to believe that college regulations prohibiting sexual assault have been violated, the College will pursue strong disciplinary action through its student conduct and due process procedures. This discipline includes the possibility of suspension or dismissal from the College. Additional sanctions may include probation, probation with limitations of College activities, restitution, community service, suspension, or dismissal. An individual charged with sexual assault can be prosecuted under New Jersey criminal statutes and disciplined under Sussex County Community College's Institutional Policies. Even if the criminal justice authorities choose not to prosecute, the College can pursue disciplinary action.

Campus Sexual Assault Victim's Bill of Rights Introduction:

A college or university in a free society must be devoted to the pursuit of truth and knowledge through reason and open communication among its members. Academic communities acknowledge the necessity of being intellectually stimulating, where the diversity of ideas is valued. Its rules must be conceived for the purpose of furthering and protecting the rights of all members of the university community in achieving these ends. The boundaries of personal freedom are limited by applicable state and federal laws and institutional rules and regulations governing interpersonal behavior. In creating a community free from violence, sexual assault, and non-consensual sexual contact, respect for the individual and human dignity are of paramount importance.

The State of New Jersey recognizes that the impact of violence on its victims and the surrounding community can be severe and long-lasting. Thus, it has established this Bill of Rights to articulate requirements for policies, procedures, and services designed to ensure that the needs of victims are met and that the colleges and universities in New Jersey create and maintain communities that support human dignity.

Bill of Rights

The following Rights shall be accorded to victims of sexual assault that occur:

- on the campus of any public or independent institution of higher education in the state of New Jersey and
- where the victim or alleged perpetrator is a student at that institution and/or
- when the victim is a student involved in an off-campus sexual assault.

Human Dignity Rights

- to be free from any suggestion that victims must report the crimes,
- to be assured of any other right guaranteed under this policy,
- to have any allegations of sexual assault treated seriously; the right to be treated with dignity.
- to be free from any suggestion that victims are responsible for the commission of crimes against them,
- to be free from any pressure from campus personnel to o report crimes if the victim does not wish to do so, o report crimes as lesser offenses than the victim perceives the crime to be, o refrain from reporting crimes, o refrain from reporting crimes to avoid unwanted personal publicity.

Rights to Resources On and Off-Campus

- to be notified of existing campus and community based medical, counseling, mental health and student services for victims of sexual assault whether or not the crime is formally reported to campus or civil authorities.
- to have access to campus counseling under the same terms and conditions as applying to other students in their institution seeking such counseling,
- to be informed of and assisted in exercising:
 - any rights to confidential or anonymous testing for sexually transmitted diseases, human immunodeficiency virus and/or pregnancy.
 - any rights that may be provided by law to compel and disclose the results of testing of sexual assault suspects for communicable diseases.

Campus Judicial Rights

- to be afforded the same access to legal assistance as the accused.
- to be afforded the same opportunity to have others present during any campus disciplinary proceeding that is allowed the accused.
- to be notified of the outcome of the sexual assault disciplinary proceeding against the accused simultaneously.

Legal Rights

- to have any allegation of sexual assault investigated and adjudicated by the appropriate criminal and civil authorities of the jurisdiction in which the sexual assault is reported,
- to receive full and prompt cooperation and assistance of campus personnel in notifying the proper authorities,
- to receive full and prompt victim-sensitive cooperation of campus personnel with regard to obtaining, securing and maintaining evidence, including a medical examination when it is necessary to preserve evidence of the assault.

Campus Intervention Rights

- to require campus personnel to take reasonable and necessary actions to prevent further unwanted contact of victims by their alleged assailant,
- to be notified of the options for and provided assistance in changing academic and living situations if such changes are reasonably available.

Sexual Assault Awareness Program

Annually the College's Student Success Center will provide educational programs related to sexual assault.

What is sexual assault?

The Federal Government defines "sexual assault" to mean any kind of non-consensual sexual violence including but not limited to rape, acquaintance rape, domestic violence, dating violence, and stalking. Rape and acquaintance rape are defined as acts of nonconsensual sexual penetration. The other acts are defined as follows:

1. "Dating violence" means violence by a person who has been in a romantic or intimate relationship with the victim. Whether there was such a relationship will be gauged by its length, type, and frequency of interaction.
2. "Domestic violence" means asserted violent misdemeanor and felony offenses committed by the victim's current or former spouse, current or former cohabitant, or a person similarly situated under domestic or family violence law, or anyone else protected under domestic or family violence law.
3. "Stalking" means a course of conduct directed at a specific person that would cause a reasonable person to fear for her, his or others' safety, or to suffer substantial emotional distress.

What is Consent?

Consent in this policy means a clear YES to the specific act in question. Consent is informed, knowing, and voluntary. Consent is active, not passive. Silence, in and of itself,

cannot be interpreted as consent. Consent to one form of sexual activity cannot imply consent to future sexual acts. At any time, a participant can communicate that he or she no longer consents to continue the activity. Consent cannot be procured by use of physical force, compelling threats, intimidating behavior, or coercion.

What to Do If You Are a Victim of Sexual Assault

First, you should get to a place of safety. Next, get the necessary medical treatment. A DASI Confidential Sexual Violence Advocate can be with you during medical and legal proceedings.

Call 973-875-1211 for an advocate or to activate the Sussex County Sexual Assault Response Team (SART).

According to the DASI.org website, it is important that you:

- Do not change your clothing
- Do not bathe, shower or douche
- Do not urinate, if possible
- Do not drink, eat or smoke
- Place additional evidence (such as clothing or bedding) in a paper bag

Physical Examination and Medical Treatment

A complete physical examination is very important. Victims of sexual assault may not be aware of external and internal injuries that may require treatment. Early medical attention is necessary to test for and possibly prevent sexually transmitted diseases or infections. If left untreated, sexually transmitted infections/venereal diseases may result in serious health problems. Early medical attention is necessary to test for and receive treatment to prevent unwanted pregnancy.

Follow-up care is very important to ensure that injuries have healed properly and that sexually transmitted infections are treated appropriately. Tests for infections and pregnancy must be repeated.

Evidence Collection

A forensic kit is typically used within 5 days to collect evidence from the victim's body (the earlier, the better). This evidence can be used in prosecuting the offender. The victim may have the forensic kit done anonymously, and the evidence can be held for 90 days. There is no cost associated with the forensic evidence collection and initial treatment.

[http://www.dasi.org/what we do sexual assault.php](http://www.dasi.org/what_we_do_sexual_assault.php)

How to File a Complaint

There are multiple places for students to report allegations of sexual assault both on and off-campus. Reports of sexual assault can be made to any of the following:

- **On-Campus:**

James Gaddy – Chief Operating and Human Resources Officer, Title IX Coordinator
D313 (973) 300-2306

Kathleen Okay – Senior Vice President of Academic and Student Affairs, B301
(973) 300-2131 (for Confidential Campus Support)

John Kuntz – Dean of Student Affairs / Director of Athletics, E-Ath (973) 300-2252.

Fred Mamay – Director of Campus Safety & Security, B321 (973) 300-2119

Security Office – Student Center, D116, (973) 300-2104 or (973)300-2222

- **Off-Campus:**

Newton Police Department (973) 383-2525

New Jersey State Police, Sussex Barracks (973) 383-1515

Resources

The following resources exist on-campus and in the community for reporting allegations of sexual assault and obtaining appropriate medical treatment and counseling support services:

On-Campus

- Title IX Coordinator – James Gaddy, D313, 973-300-2306
- The Student Success Center, B207, 973-300-2207
- SCCC Campus Safety and Security, Student Center, D116 973-300-2222

Off-Campus

- Domestic Abuse and Sexual Assault Intervention Services
- (DASI) – 24-hr Hotline 973-875-1211
- Sussex County Sexual Assault Response Team (SART):
 - 24-hr Hotline 973-875-1211
- Warren County Domestic Abuse and Sexual Assault Crisis Center – 908-453-4121
- Morris County Morris CARES – 24-hr Hotline 973-829-0587
- Pike County, PA Safe Haven Inc. – 24-hr Hotline 570-296-4357
- Monroe County, PA Women’s Resources of Monroe County, Inc.
 - Hotline 570-421-4200
- Orange County, NY Crisis Center – 24-hr Hotline Toll-Free 1-800-832-1200
- Sussex County Prosecutor’s Office Sex Crimes Unit – 973-300-1570
- NJ Statewide Domestic Violence Hotline – 1-800-572-SAFE • NJ Statewide Sexual Violence Hotline – 1-800-601-7200
- NJ Statewide Human Trafficking Hotline – 1-877-986-7543
- Rape, Abuse, Incest National Network www.RAINN.org – 1-800-656-4673

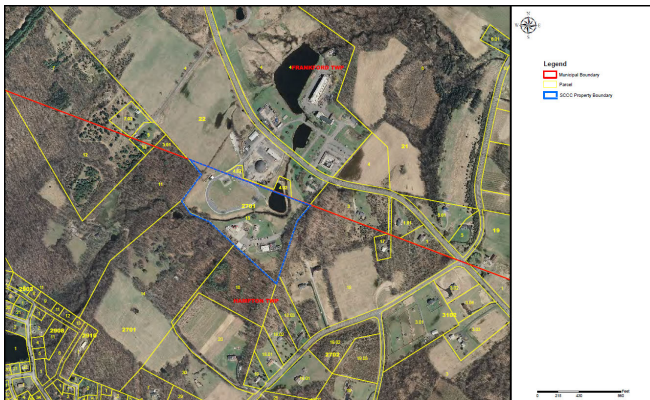
Campus Awareness Programs

SCCC provides educational programs related to awareness and prevention of sexual assault. Annually, the Student Success Center provides workshops on prevention, and the Office of Campus Life provides workshops on safety and health and wellness. A number of workshops and seminars, documentaries and film series, and survivor panels are held on campus in collaboration with Domestic Abuse and Sexual Assault Intervention Services (DASI) of Sussex County and with the Center for Prevention and Counseling of Newton, NJ. Presentations for faculty and staff on sexual violence and trauma are regularly scheduled.

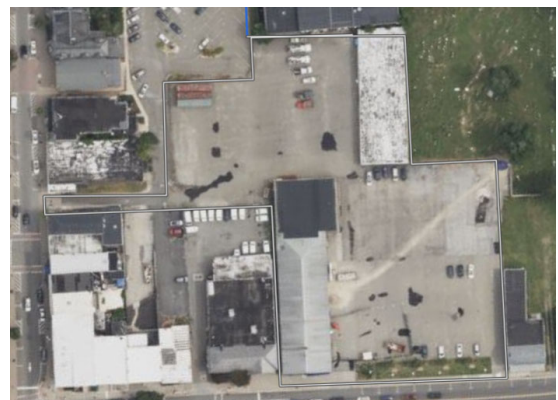
Campus Maps



Main Campus
1 College Hill Rd. Newton, NJ



PSTA
114 Morris Turnpike Newton, NJ



MTEC
41-47 Main St. Newton, NJ